



Beschrijvend Bodemonderzoek

3M Zwijndrecht en omgevende
gebieden

VOORBEREID VOOR

3M Science.
Applied to Life.™

3M Belgium bvba

DATUM

22 december 2023

REFERENTIE

0540247



DOCUMENT GEGEVENS

DOCUMENT TITEL	Beschrijvend Bodemonderzoek
DOCUMENT ONDERTITEL	3M Zwijndrecht en omgevende gebieden
PROJECT NUMMER	0540247
Datum	22 december 2023
Versie	1
Geschreven door	Sarah Verhulst, Nel Van Houdt, Ronald Ruijter, Sebastiaan Sommereyns, Kenneth Seys, Lieselotte Sorgeloos, Gerd Van den Daele, Pieter Schrooten, Jan Van linden en Dirk Nuyens
Klantnaam	3M Belgium bvba



DEEL 6 – FIGUREN

**FIGUUR 8 VISUALISATIE RESULTATEN IN VASTE DEEL
VAN DE AARDE O.B.V. IDW INTERPOLATIE**



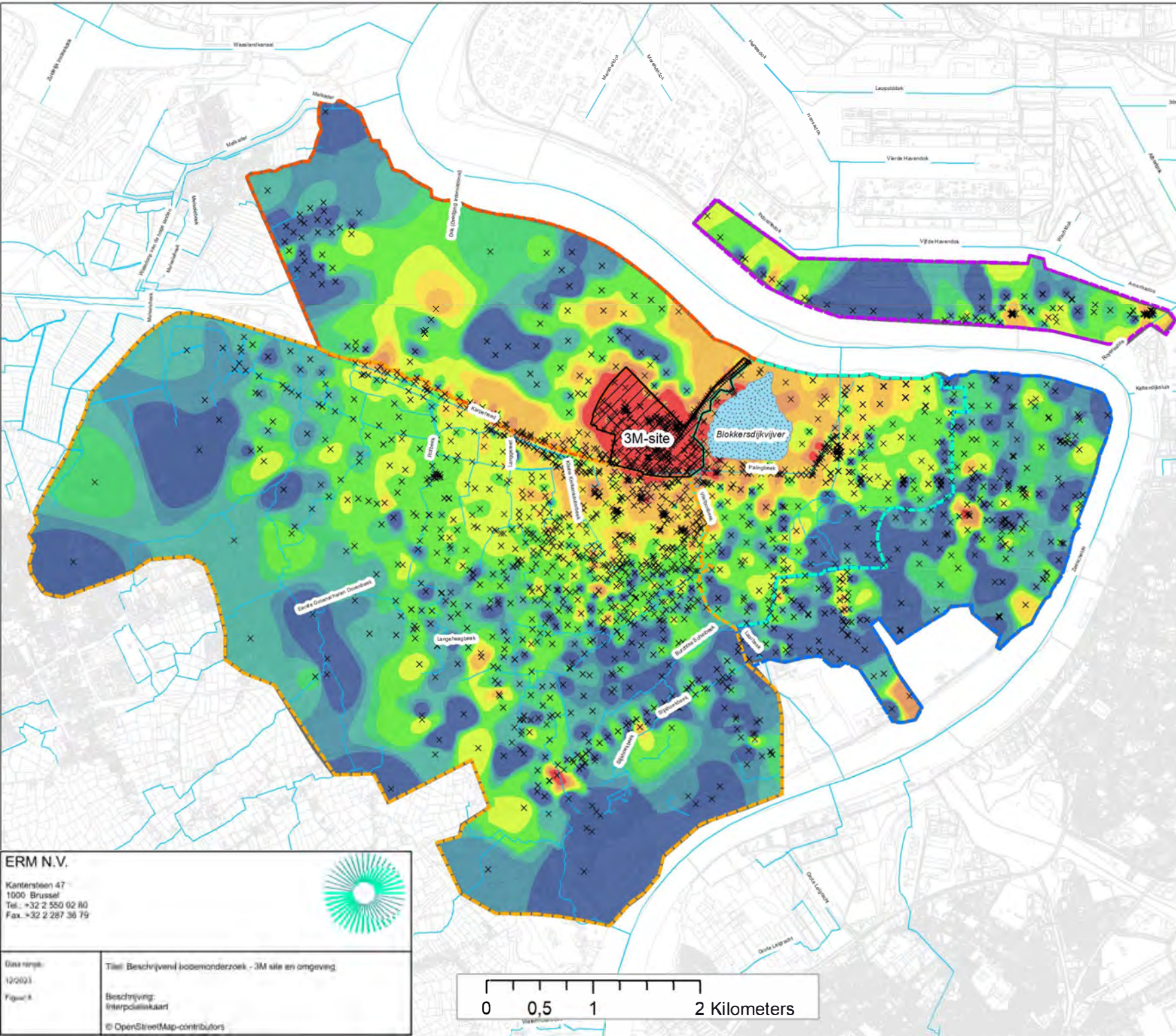
PFOS - Grond

- Volledig studiegebied
- Gebied ten zuiden van E34
- Industriezone
- Natuurgebieden
- Linkeroever
- Rechteroever
- Blokkersdijk vijver
- 3M-site
- Beekwater


× voorbeeld punt (0 - 50 cm)

PFOS in grond (0 - 50 cm) (µg/kg)

- < 3 (RW)
- 3,0 - 3,8 (BSN I/II)
- 3,8 - 4,9 (BSN III*)
- 4,9 - 6
- 6,0 - 10
- 10 - 18 (BSN III)
- 18 - 25
- 25 - 50
- 50 - 110
- > 110 (BSN IV/V)



ERM N.V.
Kantersteen 47
1000 Brussel
Tel.: +32 2 550 02 80
Fax: +32 2 287 36 79



Date versie: 12/09/11
Titel: Beschrijvend bodemonderzoek - 3M site en omgeving.
Beschrijving: Interactiekaart
© OpenStreetMap-contributors















PFOS - Grond


-  Volledig studiegebied
-  Gebied ten zuiden van E34
-  Industriezone
-  Natuurgebieden
-  Linkeroever
-  Rechteroever
-  Blokkesdijk vijver
-  3M-site
-  Oppervlaktewater

× voorbeeld punt (50 - 100 cm)

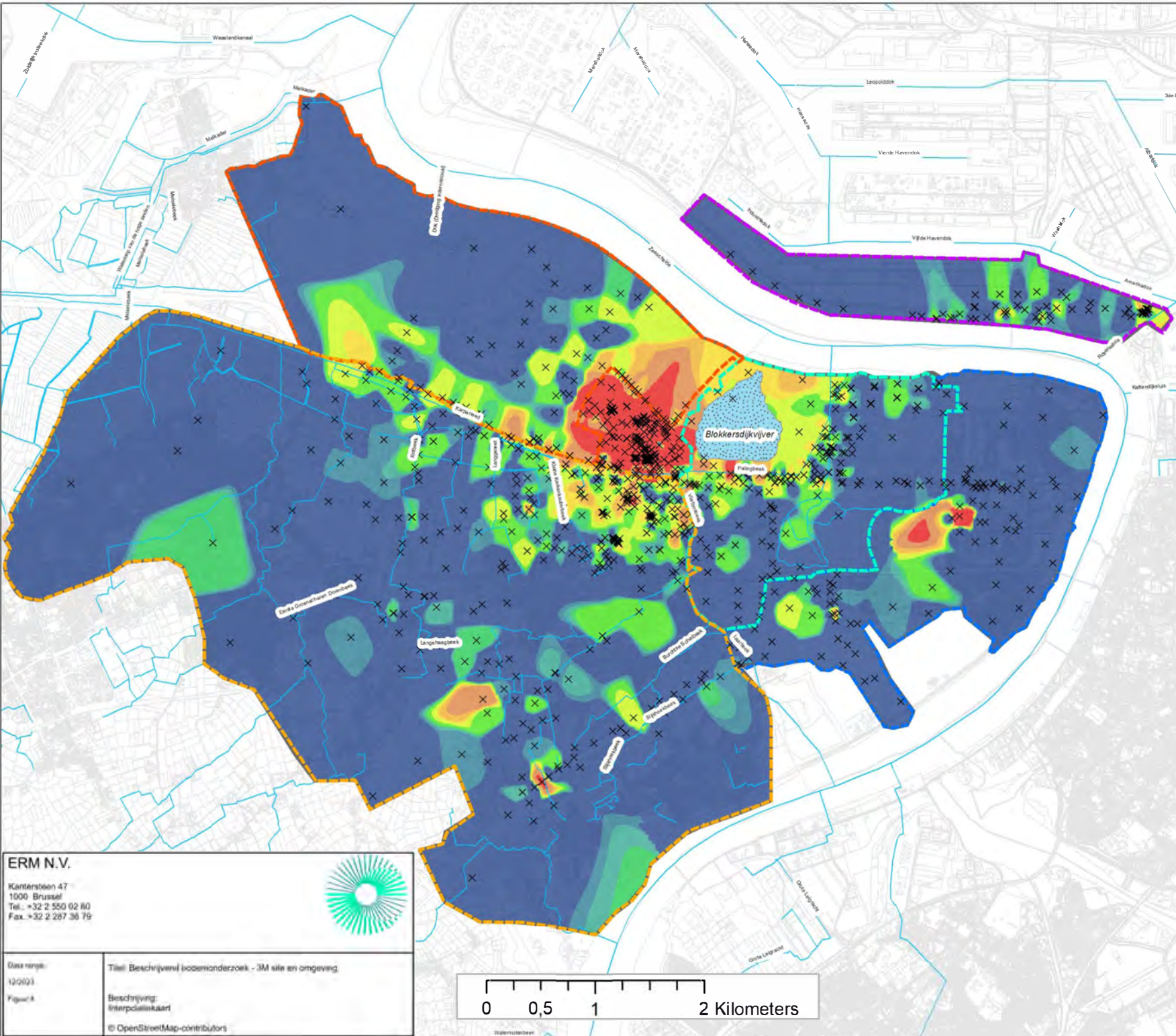
PFOS in grond (50 - 100 cm) (µg/kg)

-  < 3 (RW)
-  3,0 - 3,8 (BSN I/II)
-  3,8 - 4,9 (BSN III*)
-  4,9 - 6
-  6,0 - 10
-  10 - 18 (BSN III)
-  18 - 25
-  25 - 50
-  50 - 110
-  > 110 (BSN IV/V)

ERM N.V.
Kantersteen 47
1000 Brussel
Tel. +32 2 550 02 80
Fax. +32 2 287 36 79

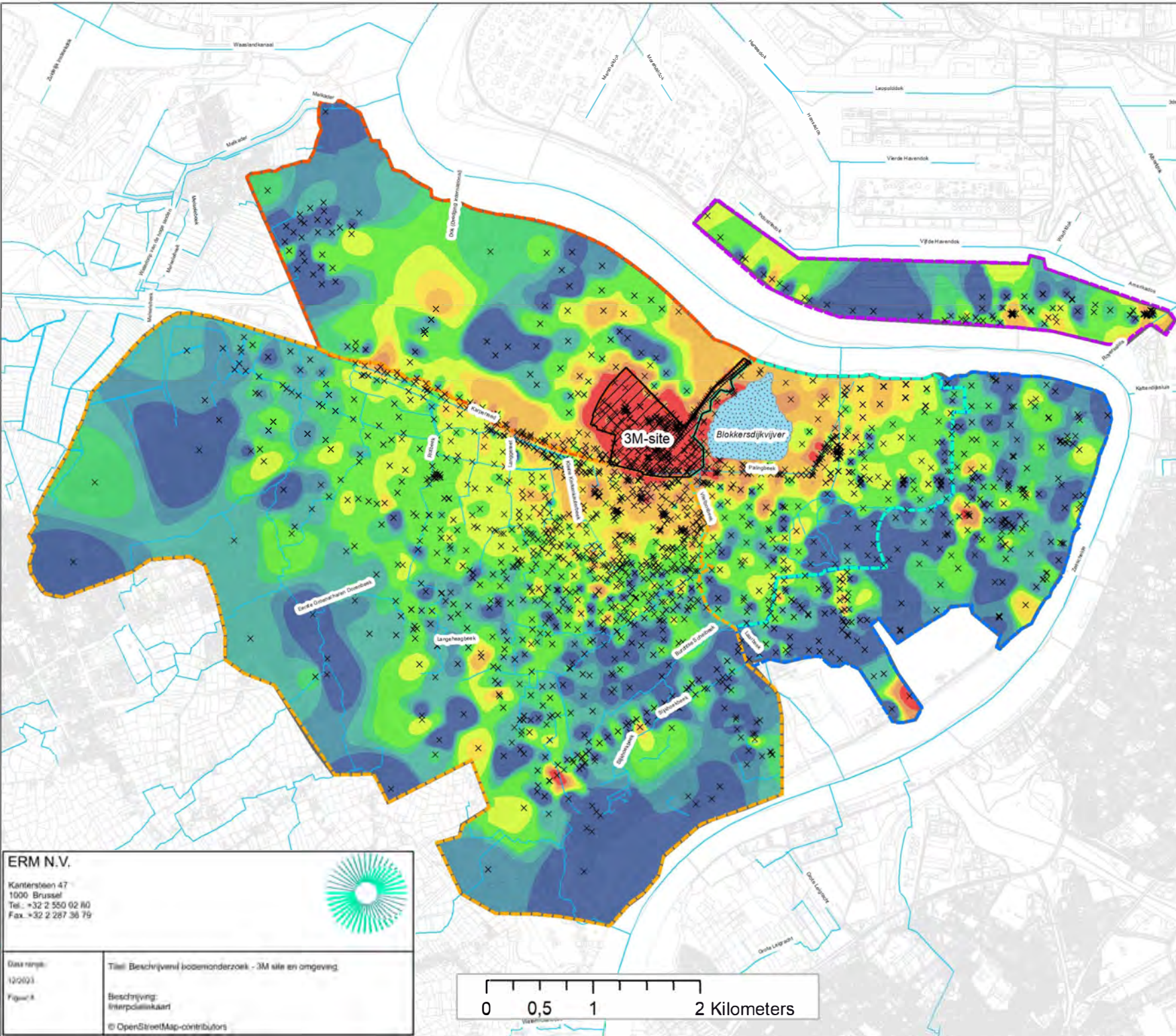


Gas nrsg: 120203
Titel: Beschrijvend bodemonderzoek - 3M site en omgeving.
Beschrijving: Interplankaart
© OpenStreetMap-contributors





PFSA - Grond




- Volledig studiegebied
- Gebied ten zuiden van E34
- Industriezone
- Natuurgebieden
- Linkeroever
- Rechteroever
- Blokkesdijk vijver
- 3M-site
- Beekwater

× voorbeeld punt (0 - 50 cm)

PFSA in grond (0 - 50 cm) (µg/kg)

- < 3
- 3,0 - 3,8
- 3,8 - 4,9
- 4,9 - 6
- 6,0 - 10
- 10 - 18
- 18 - 25
- 25 - 50
- 50 - 110
- > 110

ERM N.V.
Kantersteen 47
1000 Brussel
Tel.: +32 2 550 02 80
Fax: +32 2 287 36 79



Data type: 12/003
Figuur 8

Titel: Beschrijvend bodemonderzoek - 3M site en omgeving
Beschrijving: Interpolatiekaart
© OpenStreetMap-contributors



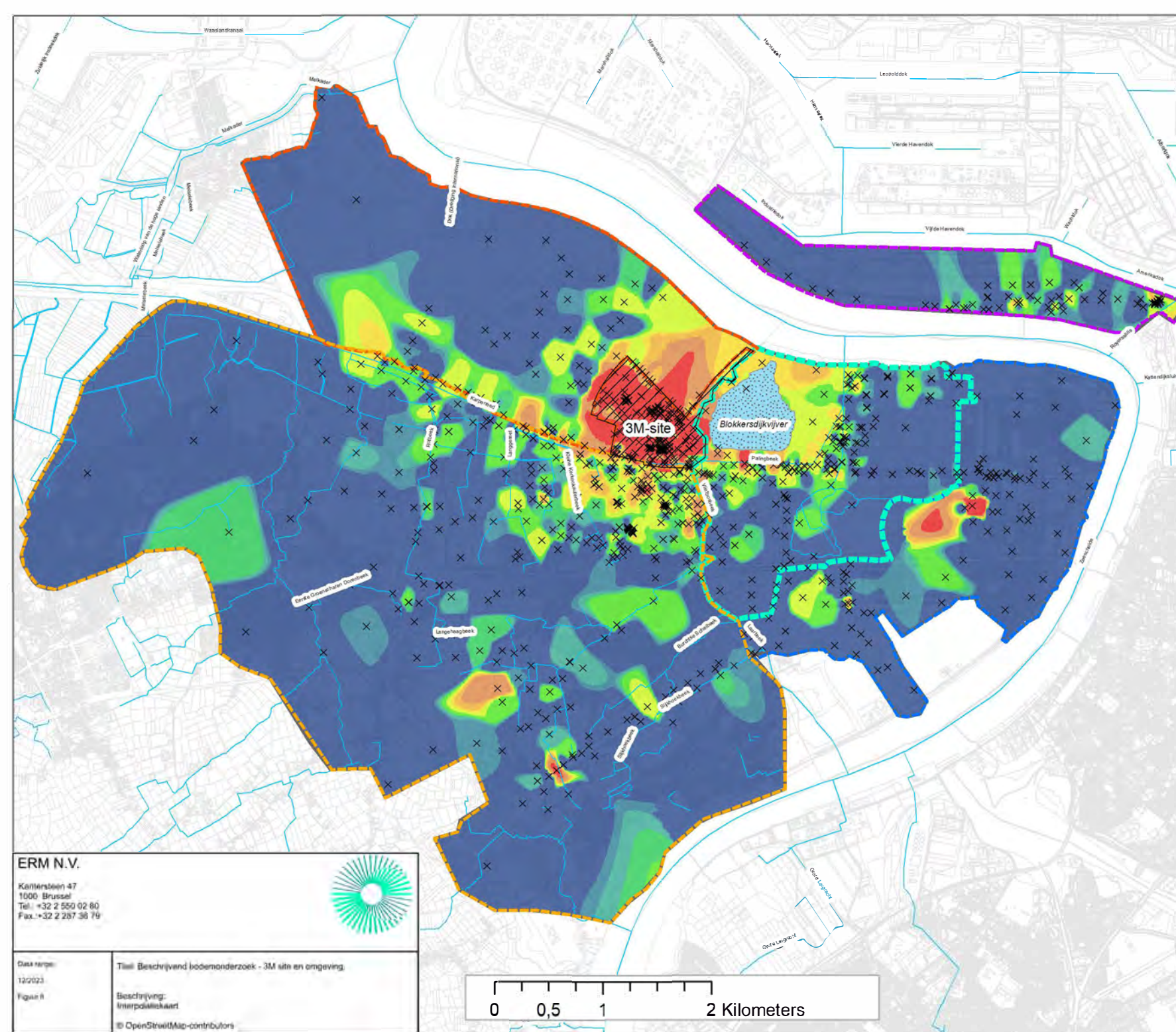
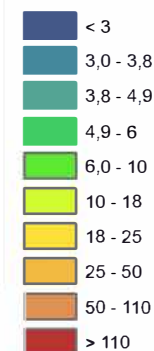


PFSA - Grond

-  Volledig studiegebied
-  Gebied ten zuiden van E34
-  Industriezone
-  Natuurgebieden
-  Linkeroever
-  Rechteroever
-  Blokkersdijk vijver
-  3M-site
-  Oppervlaktewater

× voorbeeld punt (50 - 100 cm)

PFSA in grond (50 - 100 cm) ($\mu\text{g}/\text{kg}$)



ERM N.V.

Kattenlaan 47
1000 Brussel
Tel: +32 2 550 02 60
Fax: +32 2 287 36 79



Data range:

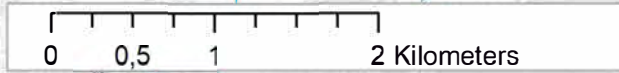
12/2023

Figure 6

Titel: Beschrijvend bodemonderzoek - 3M site en omgeving.

Beschrijving:
Interpolatiekaart

© OpenStreetMap-contributors















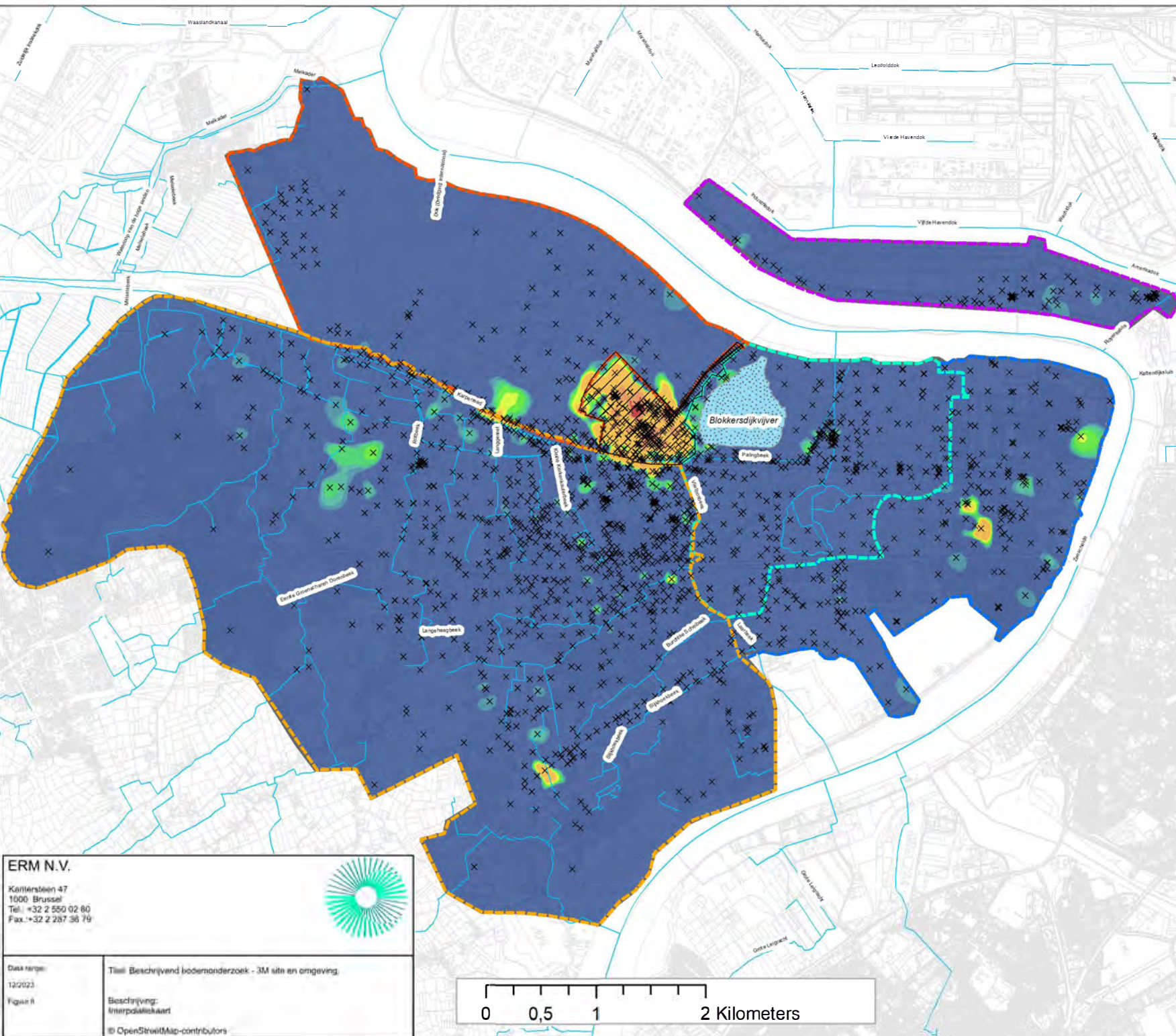
PFOA - Grond

-  Volledig studiegebied
-  Gebied ten zuiden van E34
-  Industriezone
-  Natuurgebieden
-  Linkeroever
-  Rechteroever
-  Blokkersdijk vijver
-  3M-site
-  Oppervlaktewater


× voorbeeld punt (0 - 50 cm)

PFOA in grond (0 - 50 cm) (µg/kg)

-  < 2 (RW*)
-  2 - 2,5
-  2,5 - 3 (RW)
-  3 - 4,3 (BSN III)
-  4,3 - 6
-  6 - 7,9 (BSN III*)
-  7,9 - 10
-  10 - 89
-  89 - 643 (BSN V)
-  > 643

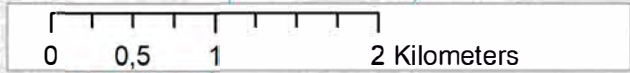


ERM N.V.
Kantoorsteen 47
1000 Brussel
Tel. +32 2 550 02 80
Fax. +32 2 287 36 79



Data verspreid: 12/2023
Figuur 11

Titell Beschrijvend bodemonderzoek - 3M site en omgeving.
Beschrijving: Interpolatiekaart
© OpenStreetMap-contributors















PFOA - Grond

-  Volledig studiegebied
-  Gebied ten zuiden van E34
-  Industriezone
-  Natuurgebieden
-  Linkeroever
-  Rechteroever
-  Blokkersdijk vijver
-  3M-site
-  Oppervlaktewater

× voorbeeld punt (50 - 100 cm)

PFOA in grond (50 - 100 cm) (µg/kg)

-  < 2 (RW*)
-  2 - 2,5
-  2,5 - 3 (RW)
-  3 - 4,3 (BSN III)
-  4,3 - 6
-  6 - 7,9 (BSN III*)
-  7,9 - 10
-  10 - 89
-  89 - 643 (BSN V)
-  > 643

ERM N.V.

Kortrijksteen 47
1000 Brussel
Tel. +32 2 550 02 80
Fax. +32 2 287 38 79



Data range:

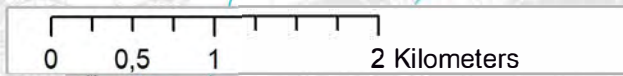
12/2023

Figuur 11

Titel: Beschrijvend bodemonderzoek - 3M site en omgeving.

Beschrijving:
Interpolatiekaart

© OpenStreetMap-contributors
















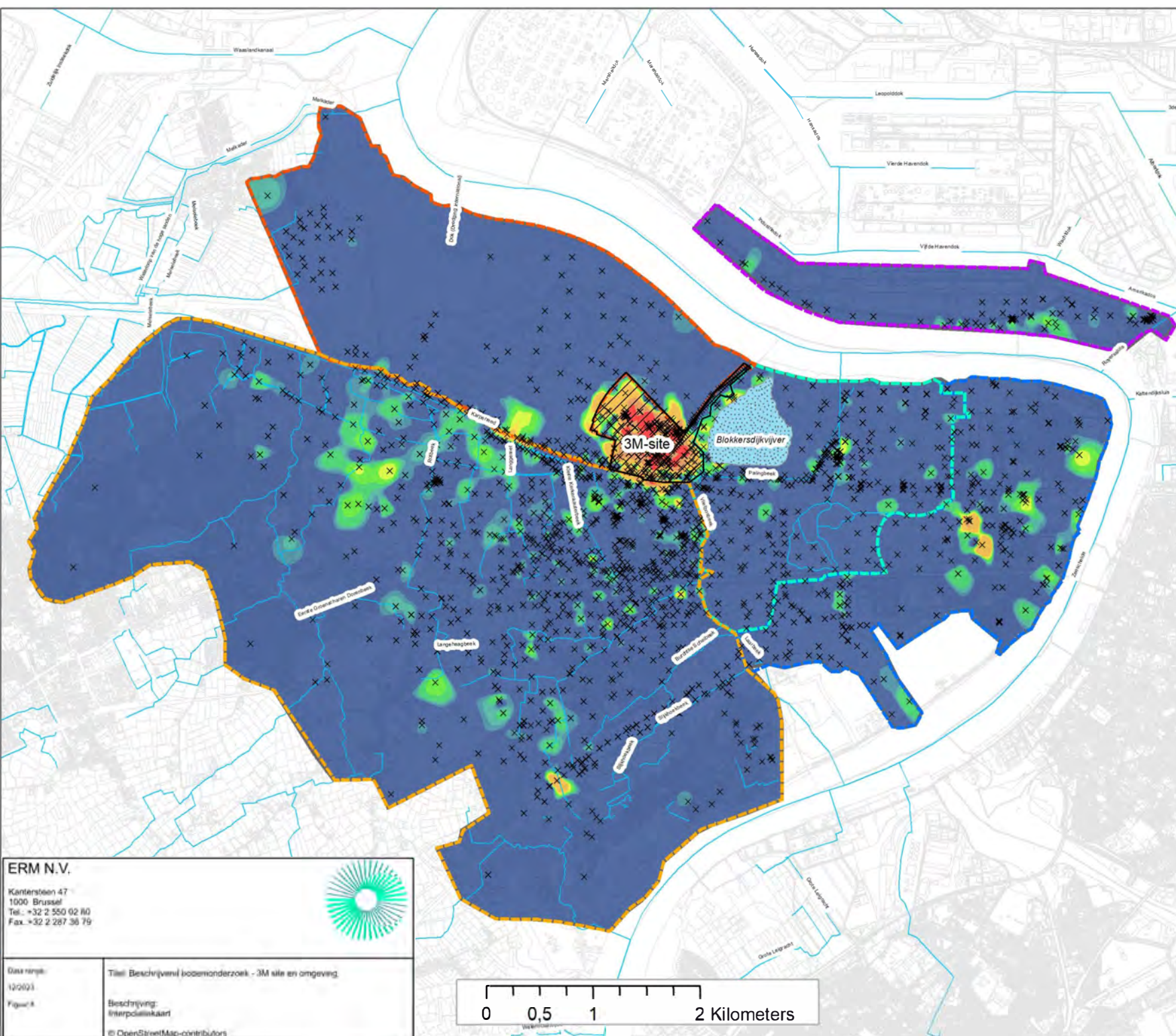
PFCA - Grond

-  Volledig studiegebied
-  Gebied ten zuiden van E34
-  Industriezone
-  Natuurgebieden
-  Linkeroever
-  Rechteroever
-  Blokkersdijk vijver
-  3M-site
-  Beekwater

× voorbeeld punt (0 - 50 cm)

PFCA in grond (0 - 50 cm) (µg/kg)

-  < 2
-  2 - 2,5
-  2,5 - 3
-  3 - 4,3
-  4,3 - 6
-  6 - 7,9
-  7,9 - 10
-  10 - 25
-  25 - 35
-  35 - 89
-  > 89



ERM N.V.
Kantersteen 47
1000 Brussel
Tel. +32 2 550 02 80
Fax. +32 2 287 36 79



Data verspreid: 12/2023
Titel: Beschrijvend bodemonderzoek - 3M site en omgeving
Beschrijving: Interplankaart
© OpenStreetMap-contributors



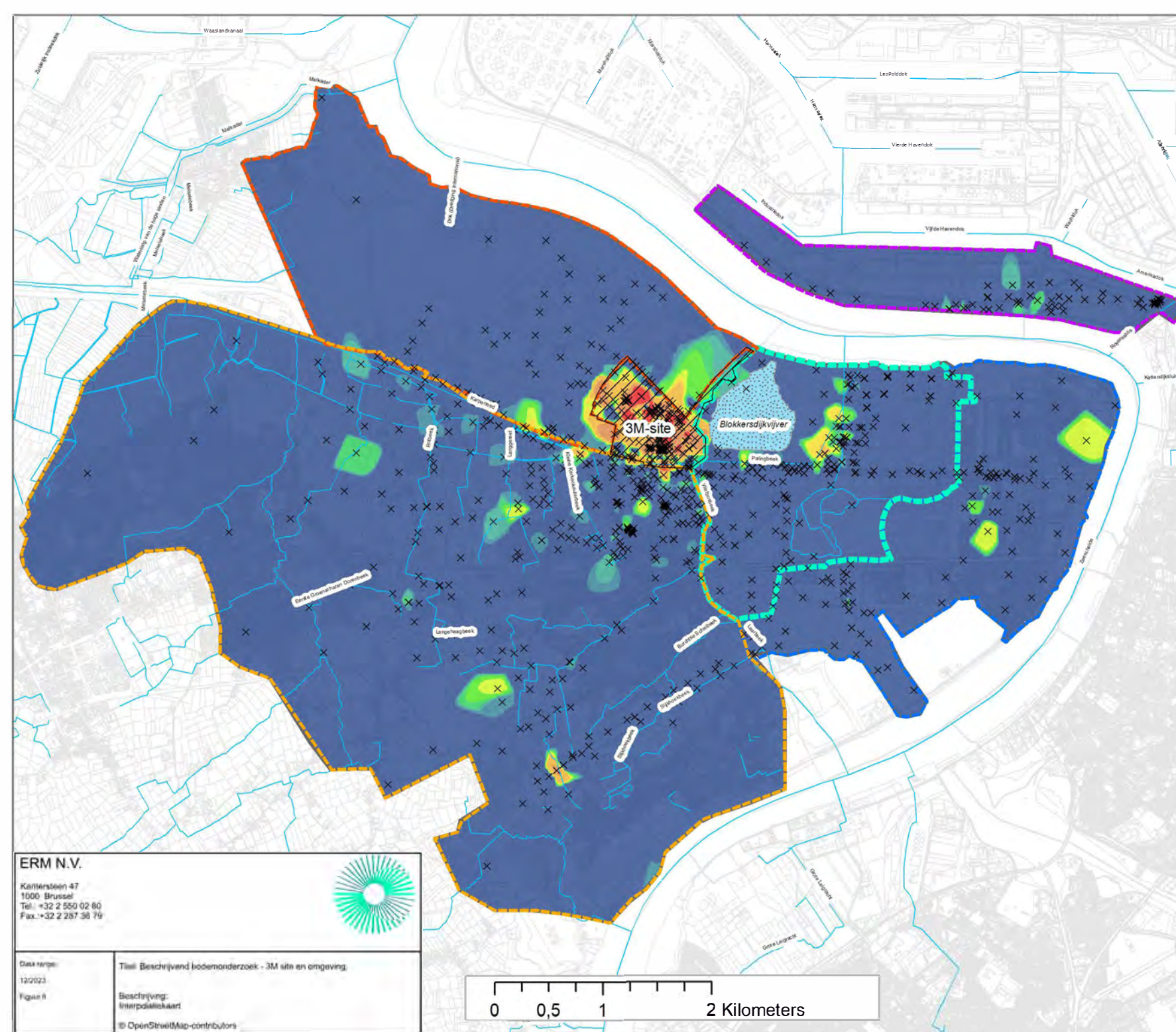
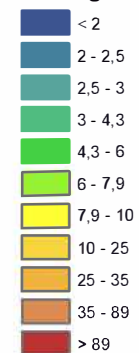


PFCA - Grond

-  Volledig studiegebied
-  Gebied ten zuiden van E34
-  Industriezone
-  Natuurgebieden
-  Linkeroever
-  Rechteroever
-  Blokkersdijk vijver
-  3M-site
-  Oppervlaktewater

× voorbeeld punt (50 - 100 cm)

PFCA in grond (50 - 100 cm) ($\mu\text{g}/\text{kg}$)



ERM N.V.

Kaizersteen 47
1000 Brussel
Tel: +32 2 550 02 60
Fax: +32 2 257 36 79



Data trefpunt:

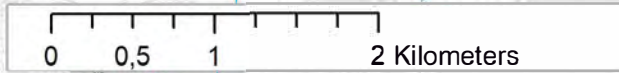
12/2023

Figuur II

Titel: Beschrijvend bodemonderzoek - 3M site en omgeving.

Beschrijving:
Interpolatiekaart

© OpenStreetMap-contributors







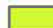




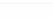


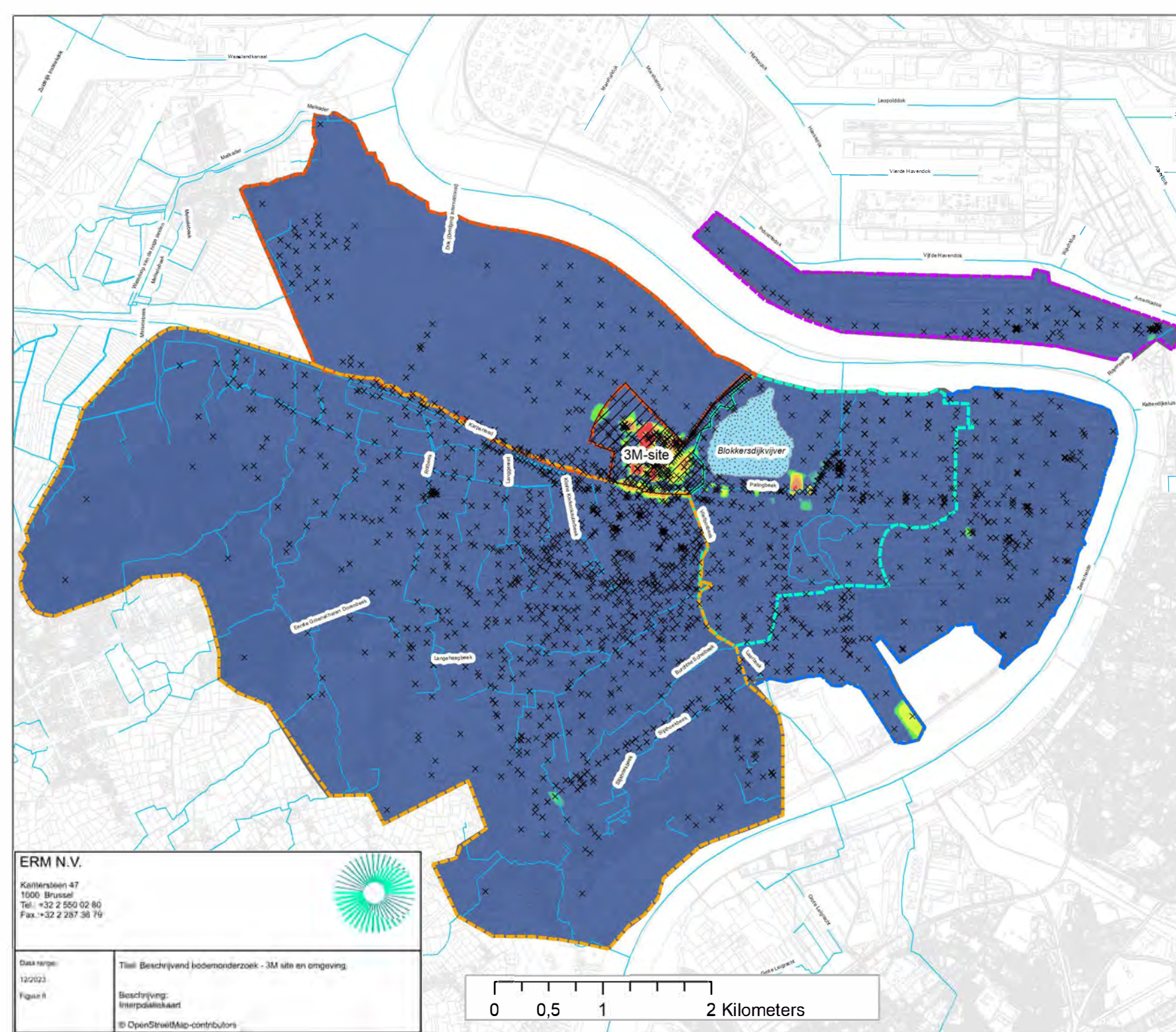
PFHxS - Grond

-  Volledig studiegebied
-  Gebied ten zuiden van E34
-  Industriezone
-  Natuurgebieden
-  Linkeroever
-  Rechteroever
-  Blokkersdijk vijver
-  3M-site
-  Oppervlaktewater


× voorbeeld punt (0 - 50 cm)

PFHxS in grond (0 - 50 cm) ($\mu\text{g/g}$)

-  < 3
-  3,0 - 3,8
-  3,8 - 4,9
-  4,9 - 6
-  6,0 - 10
-  10 - 18
-  18 - 25
-  25 - 50
-  50 - 110
-  > 110



ERM N.V.
Kortrijksesteen 47
1000 Brussel
Tel: +32 2 550 02 80
Fax: +32 2 267 38 79



Data range:
12/2023
Figuur II

Titel: Beschrijvend bodemonderzoek - 3M site en omgeving.
Beschrijving:
Interpolatiekaart
© OpenStreetMap-contributors






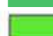








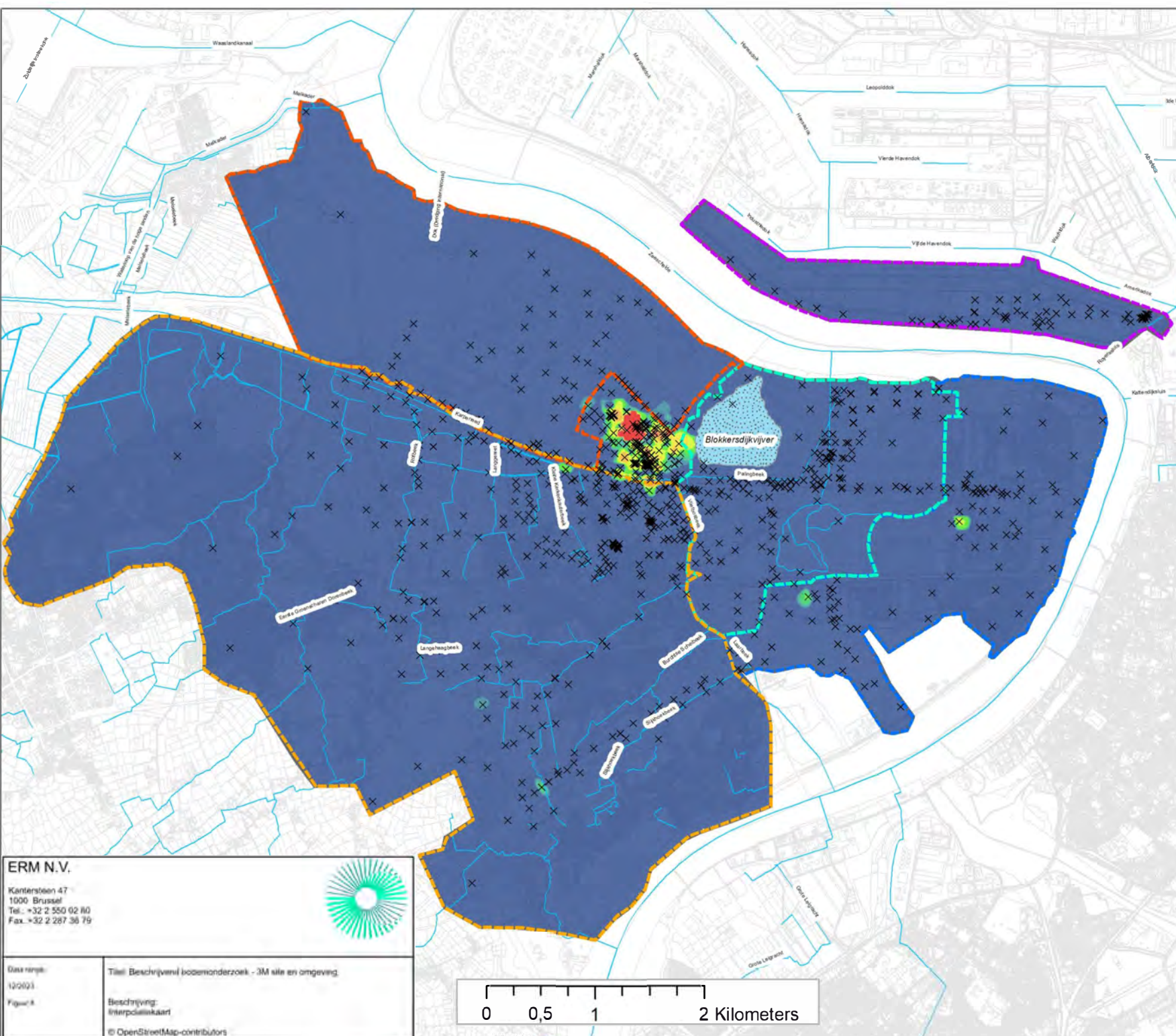
PFHxS - Grond

-  Volledig studiegebied
-  Gebied ten zuiden van E34
-  Industriezone
-  Natuurgebieden
-  Linkeroever
-  Rechteroever
-  Blokkersdijk vijver
-  3M-site
-  Oppervlaktewater

× voorbeeld punt (50 - 100 cm)

PFHxS in grond (50 - 100 cm) (µg/kg)

-  < 3
-  3,0 - 3,8
-  3,8 - 4,9
-  4,9 - 6
-  6,0 - 10
-  10 - 18
-  18 - 25
-  25 - 50
-  50 - 110
-  > 110



ERM N.V.
Kantersteen 47
1000 Brussel
Tel. +32 2 550 02 80
Fax. +32 2 287 36 79



Data type: 12/003
Figuur 8

Titel: Beschrijving van bodemonderzoek - 3M site en omgeving.
Beschrijving: Interpolatiekaart

© OpenStreetMap-contributors



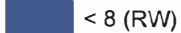
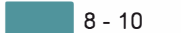



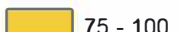

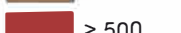


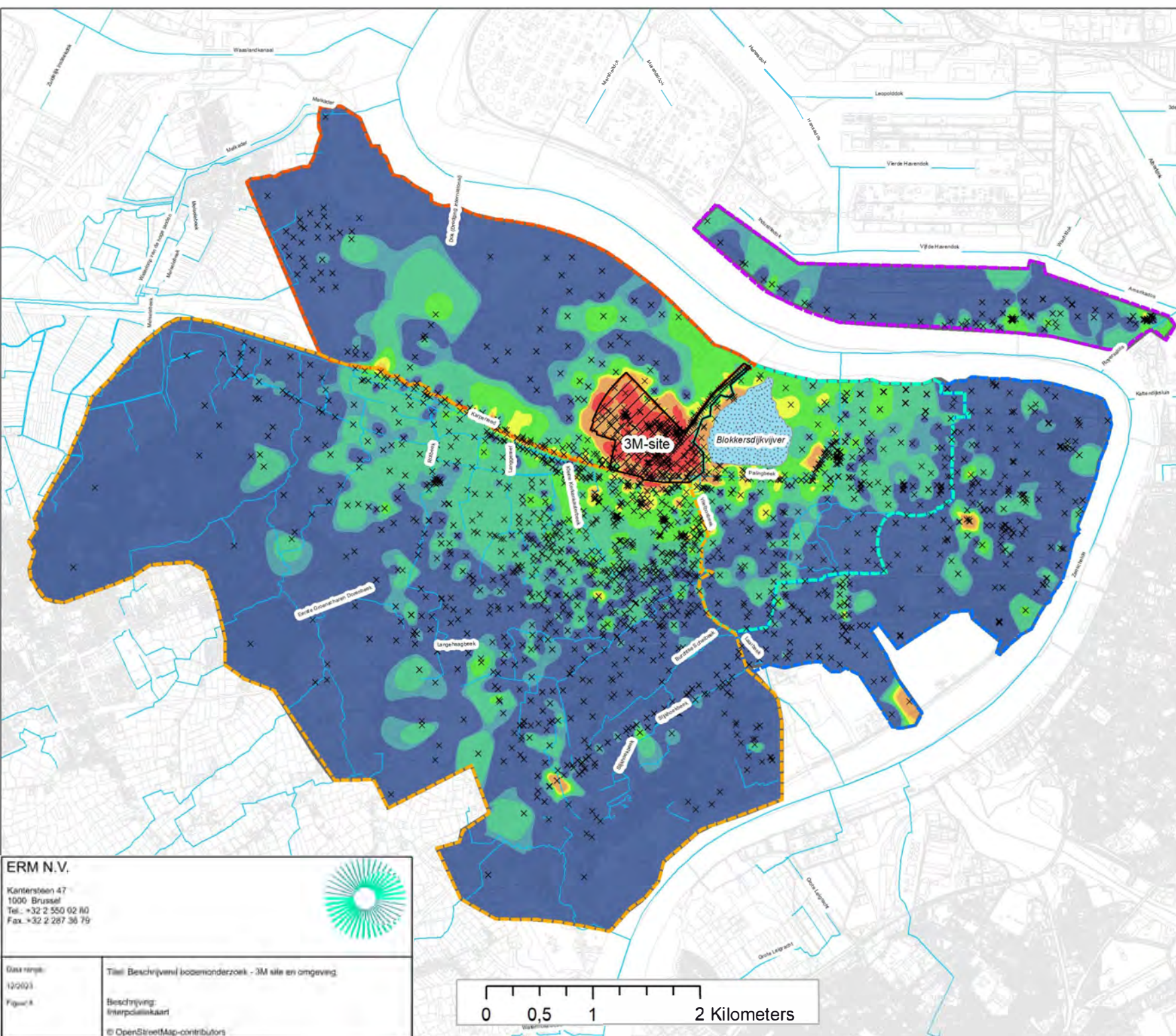
Som totaal PFAS - Grond

-  Volledig studiegebied
-  Gebied ten zuiden van E34
-  Industriezone
-  Natuurgebieden
-  Linkeroever
-  Rechteroever
-  Blokkersdijk vijver
-  3M-site
-  Beekwater

× voorbeeld punt (0 - 50 cm)

Som PFAS (0 - 50 cm) (µg/kg)

-  < 8 (RW)
-  8 - 10
-  10 - 25
-  25 - 50
-  50 - 75
-  75 - 100
-  100 - 500
-  > 500



ERM N.V.
Kentersteen 47
1000 Brussel
Tel. +32 2 550 02 80
Fax. +32 2 287 36 79



Das nmap:
12/2023
Figuur 4

Titel: Beschrijving bodemonderzoek - 3M site en omgeving
Beschrijving:
Interpolatiekaart
© OpenStreetMap-contributors













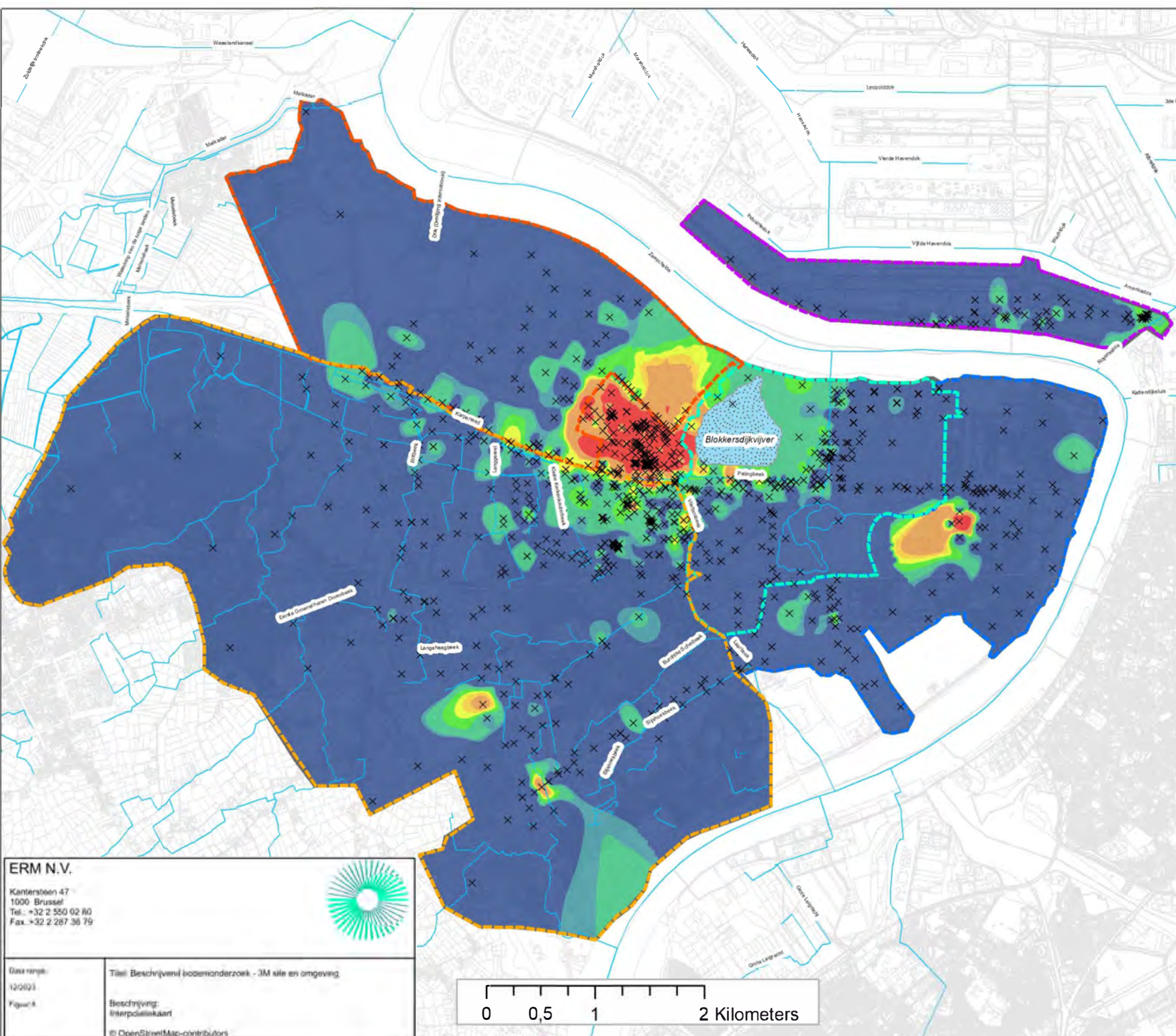
Som PFAS - Grond

-  Volledig studiegebied
-  Gebied ten zuiden van E34
-  Industriezone
-  Natuurgebieden
-  Linkeroever
-  Rechteroever
-  Blokkersdijk vijver
-  3M-site
-  Oppervlaktewater

X voorbeeld punt (50 - 100 cm)

Som PFAS (50 - 100 cm) ($\mu\text{g}/\text{kg}$)

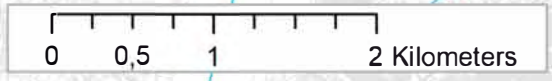
-  < 8 (RW)
-  8 - 10
-  10 - 25
-  25 - 50
-  50 - 75
-  75 - 100
-  100 - 500
-  > 500



ERM N.V.
Kantersteen 47
1000 Brussel
Tel.: +32 2 550 02 80
Fax: +32 2 287 36 79



Date versie: 12/2021
Titel: Beschrijvend bodemonderzoek - 3M site en omgeving
Beschrijving: Interpolatiekaart
© OpenStreetMap-contributors



Watermilieubez



ERM

ERM HEEFT MEER DAN 160 KANTOREN IN DE
VOLGENDE LANDEN EN GEBIEDEN OVER DE HELE
WERELD

Argentinië

Australië

België

Brazilië

Canada

China

Colombia

Frankrijk

Duitsland

Ghana

Guyana

Hong Kong

India

Indonesië

Ierland

Italië

Japan

Kazachstan

Kenia

Maleisië

Mexico

Mozambique

Nederland

Nieuw-Zeeland

Peru

Polen

Portugal

Puerto Rico

Roemenië

Senegal

Singapore

Spanje

Taiwan

Tanzania

Thailand

UK

VAE

Vietnam

VS

Zuid-Afrika

Zuid-Korea

Zwitserland

ERM Berchem

Posthoflei 5 bus 6
2600 Antwerpen-Berchem
België

T: +32 3 287 36 50

www.erm.com